



PART NAME

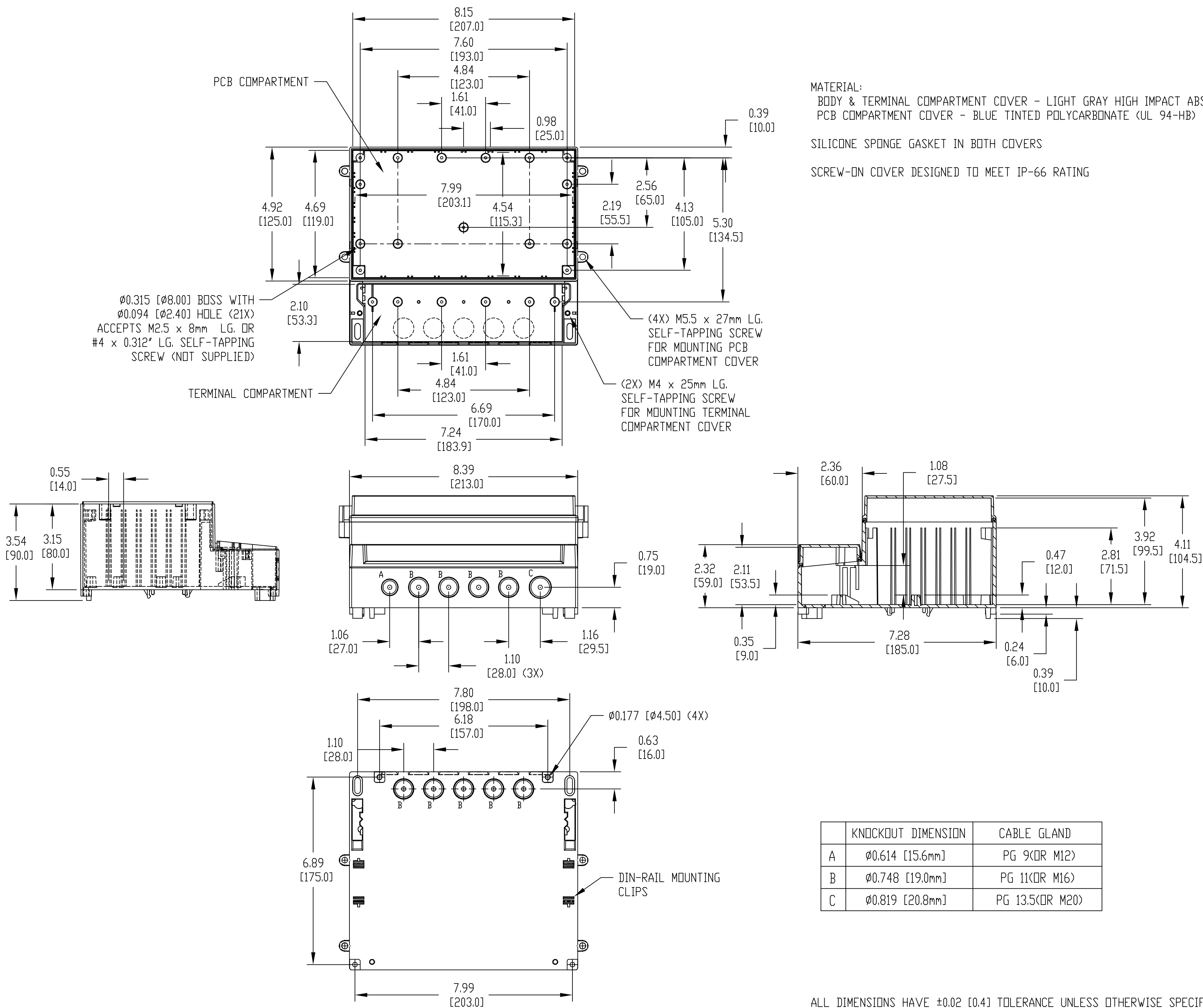
DUAL-COMPARTMENT ENCLOSURE w/SCREW-ON COVER

PART No.

DCS-11902

REV. DATE

7-30-12



	KNOCKOUT DIMENSION	CABLE GLAND
A	$\phi 0.614$ [15.6mm]	PG 9(OR M12)
B	$\phi 0.748$ [19.0mm]	PG 11(OR M16)
C	$\phi 0.819$ [20.8mm]	PG 13.5(OR M20)

ALL DIMENSIONS HAVE ± 0.02 [0.4] TOLERANCE UNLESS OTHERWISE SPECIFIED