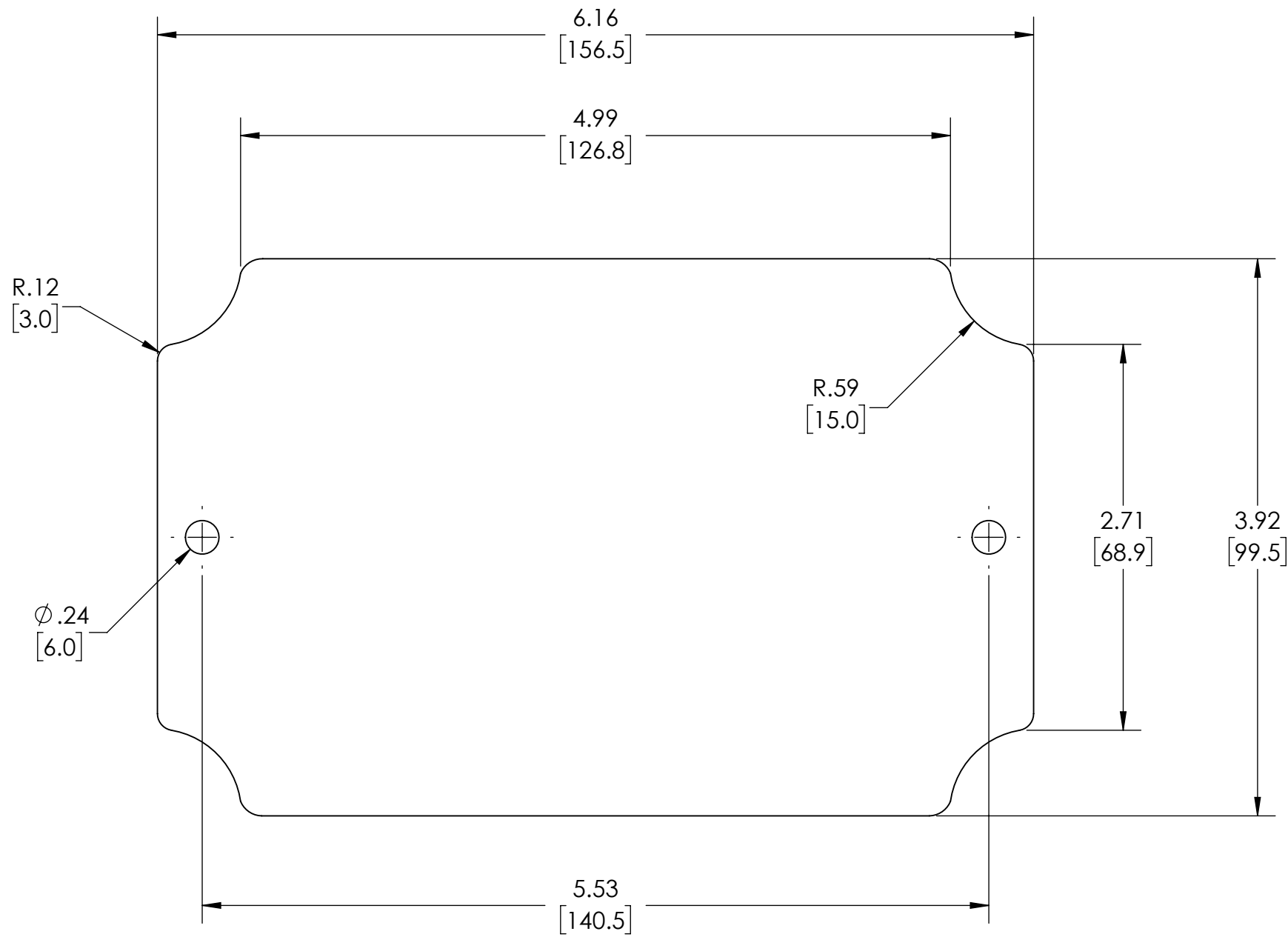
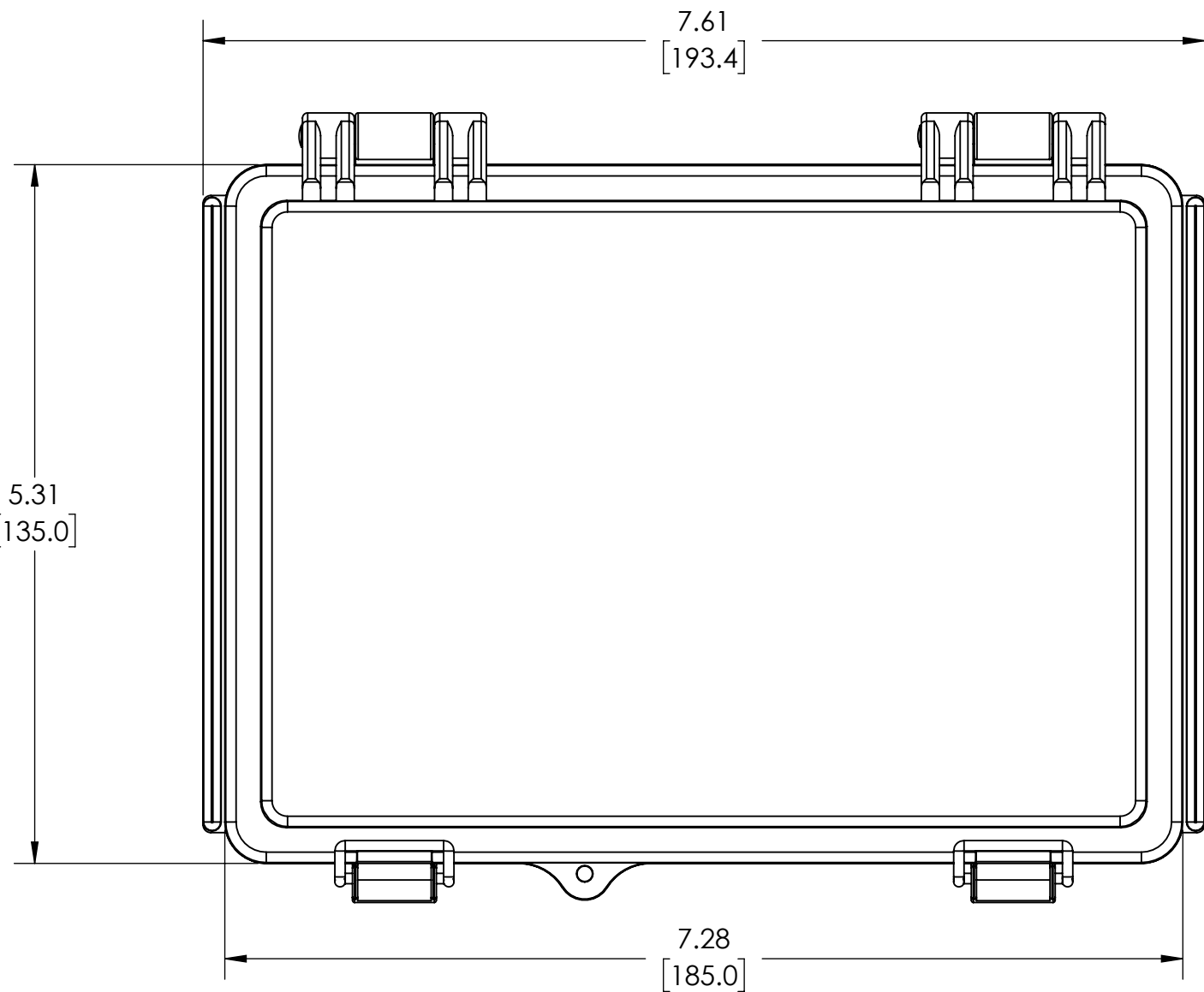
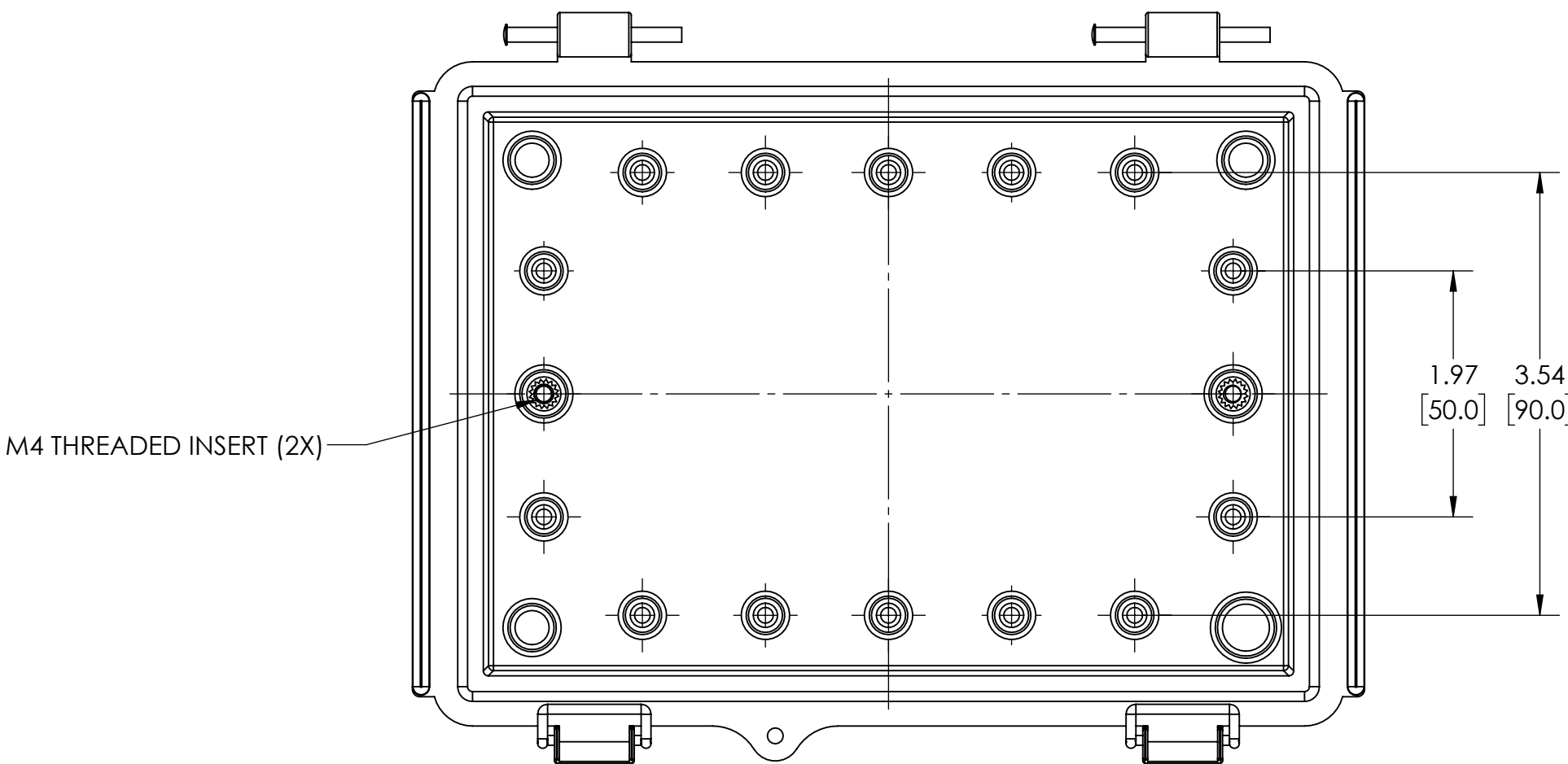


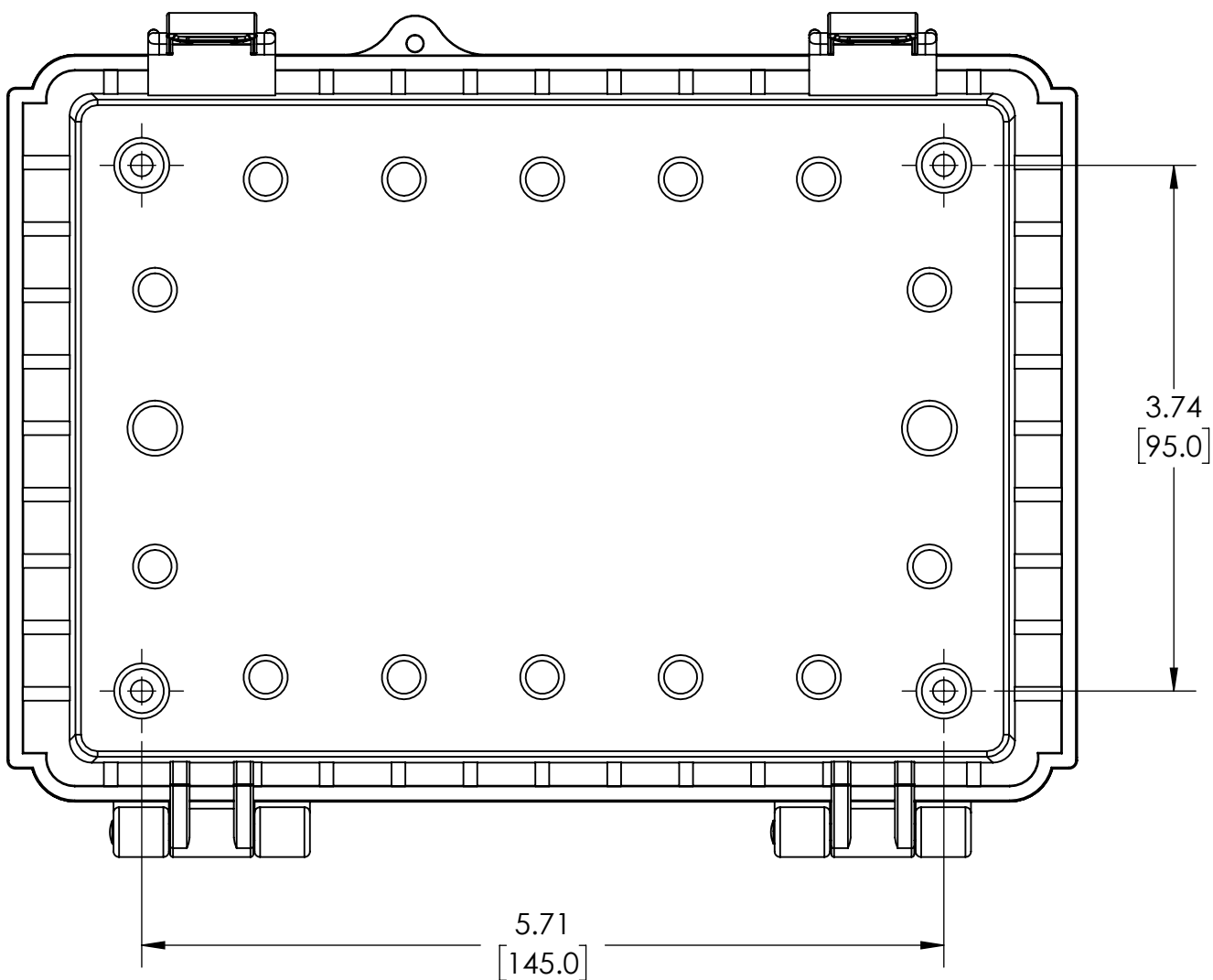
- NOTES:
- 1. MATERIAL: ABS
  - 2. FINISH: BODY/COVER - GRAY
  - 3. RoHS COMPLIANT
  - 4. CONTINUOUS GASKET IN COVER
  - 5. -20°C TO +65°C EXTENDED EXPOSURE CONDITION
  - 6. SUPPLIED WITH TWO M4 x 8mm LG. TRUSS HEAD MACHINE SCREWS
  - 7. DIMENSIONS ARE INCH [MM]
  - 8. OPTIONAL ACCESSORIES:  
INTERNAL STEEL PANEL - #PTX-25311  
INTERNAL PLASTIC PANEL - #PTX-25311-P  
MOUNTING BRACKET KIT (STAINLESS STEEL) - #NBX-10920



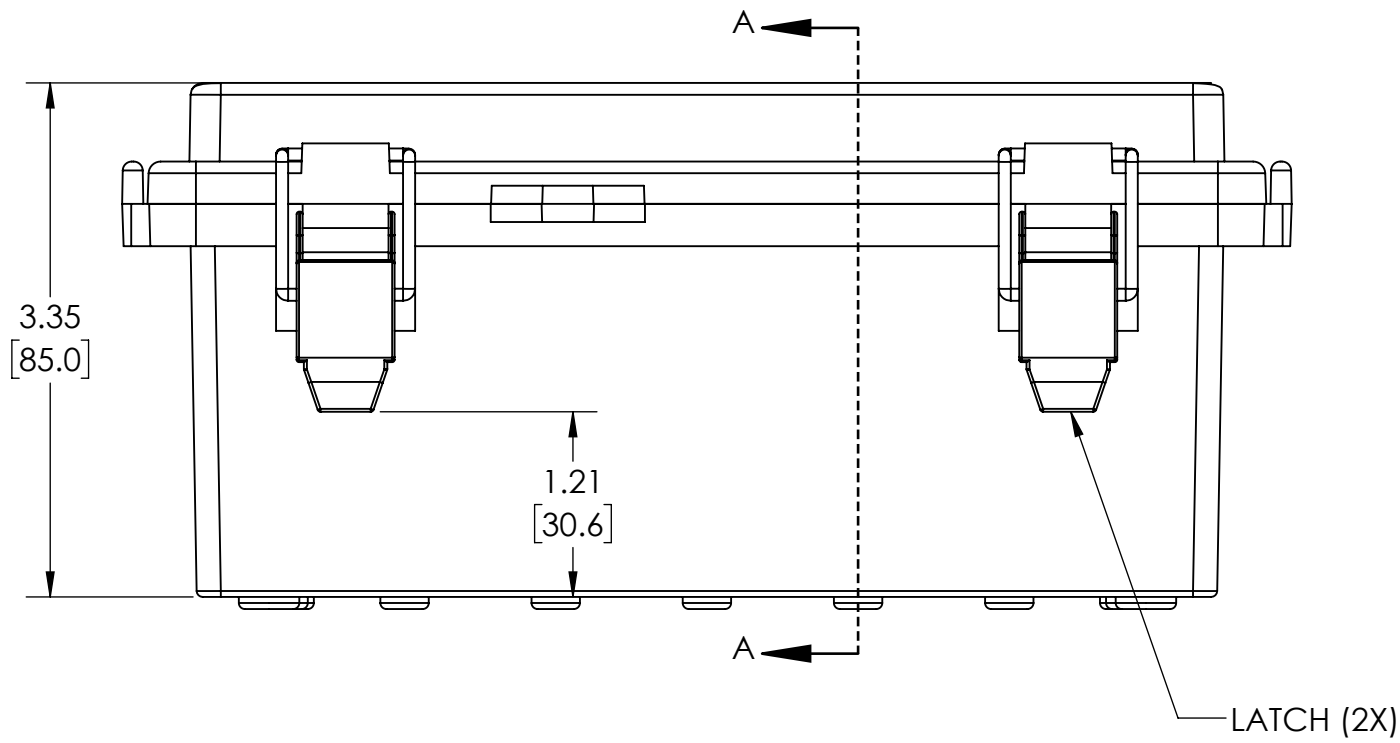
OPTIONAL INTERNAL PANEL AND SUGGESTED PC BOARD LAYOUT



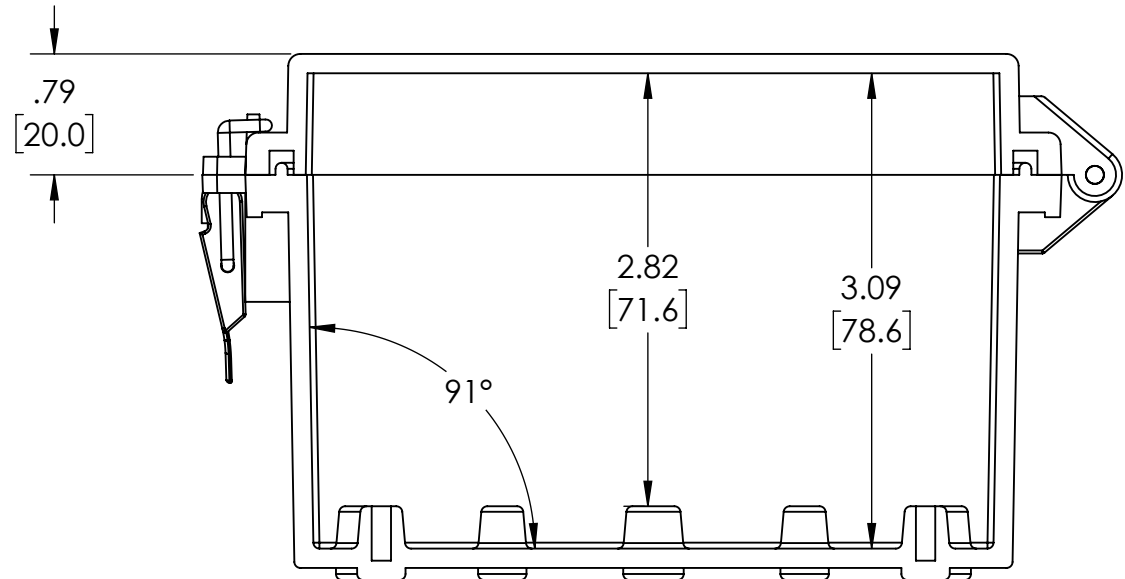
COVER REMOVED



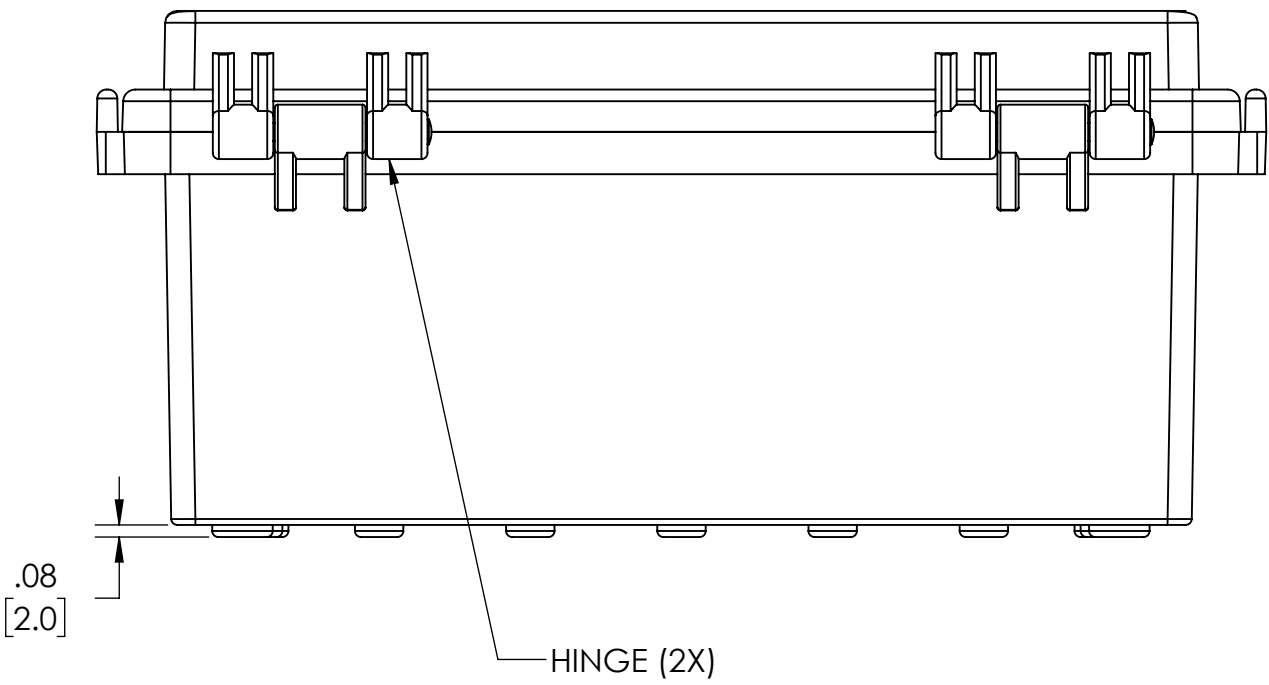
BOTTOM VIEW



LATCH (2X)



SECTION A-A



HINGE (2X)

**DRAWING FOR REFERENCE**  
WE RESERVE THE RIGHT TO MAKE CHANGES TO OUR  
STANDARD PRODUCTS. PLEASE CONSULT WITH BUD INDUSTRIES  
PRIOR TO USING THIS DRAWING FOR DESIGN PURPOSE.