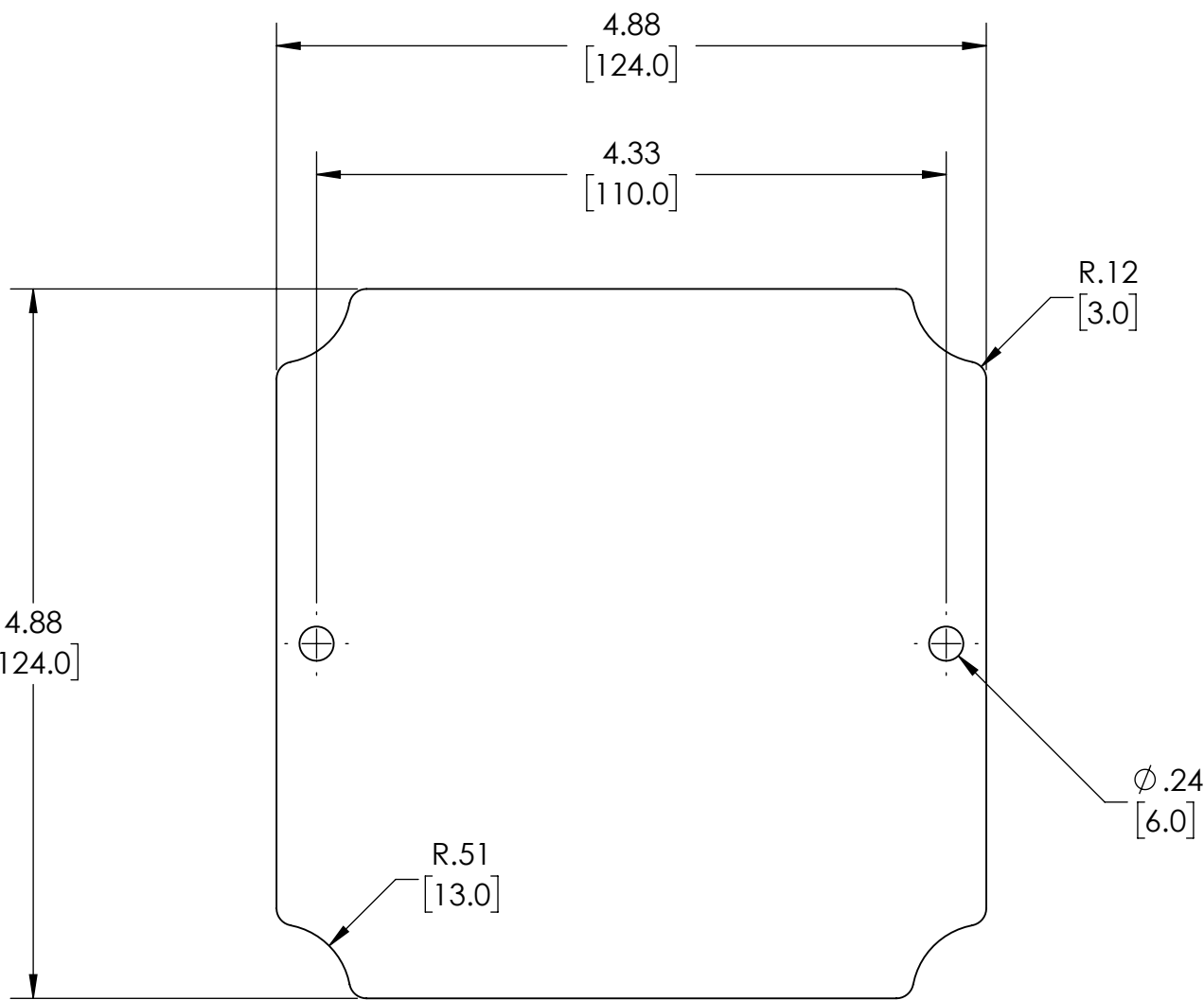
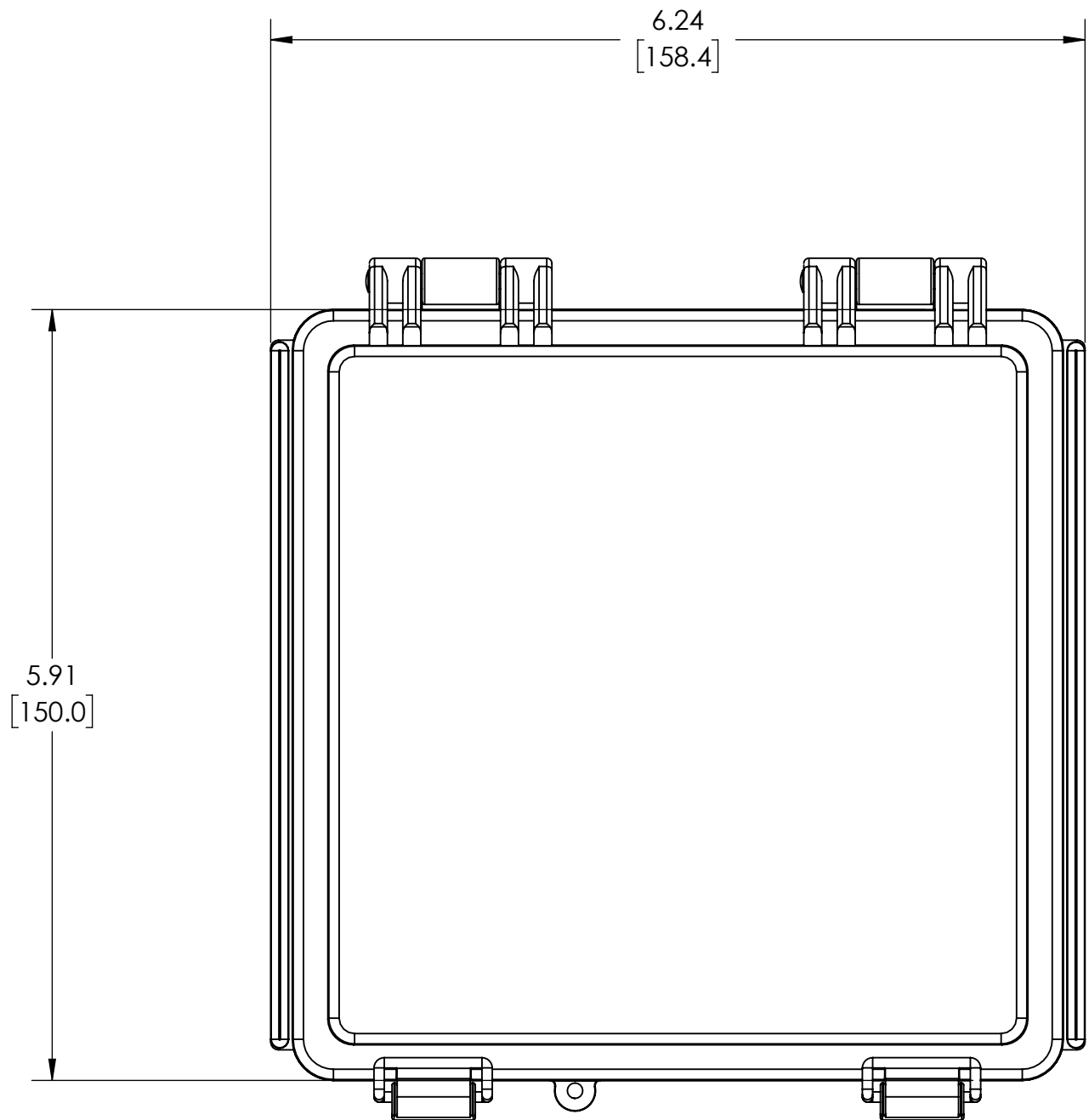
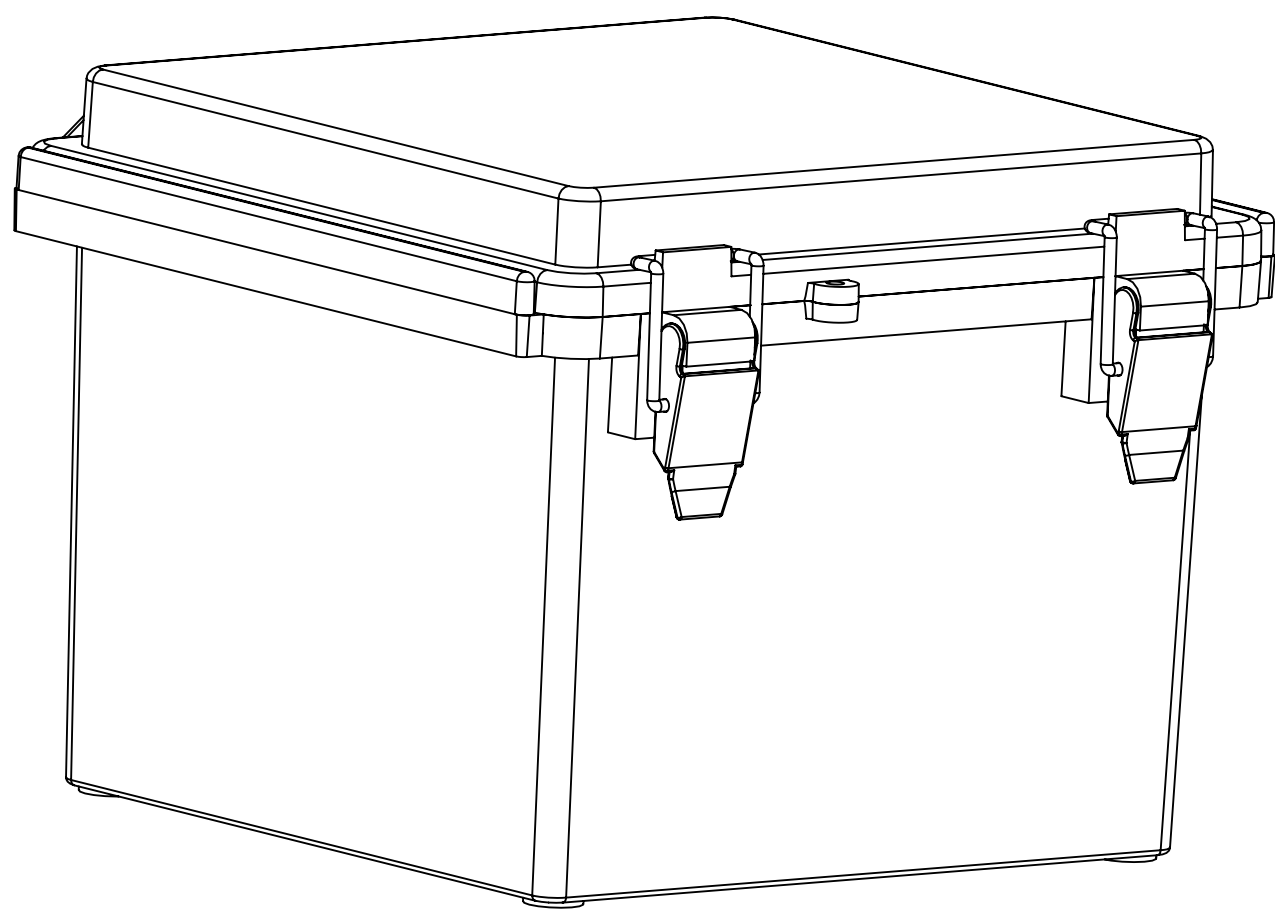
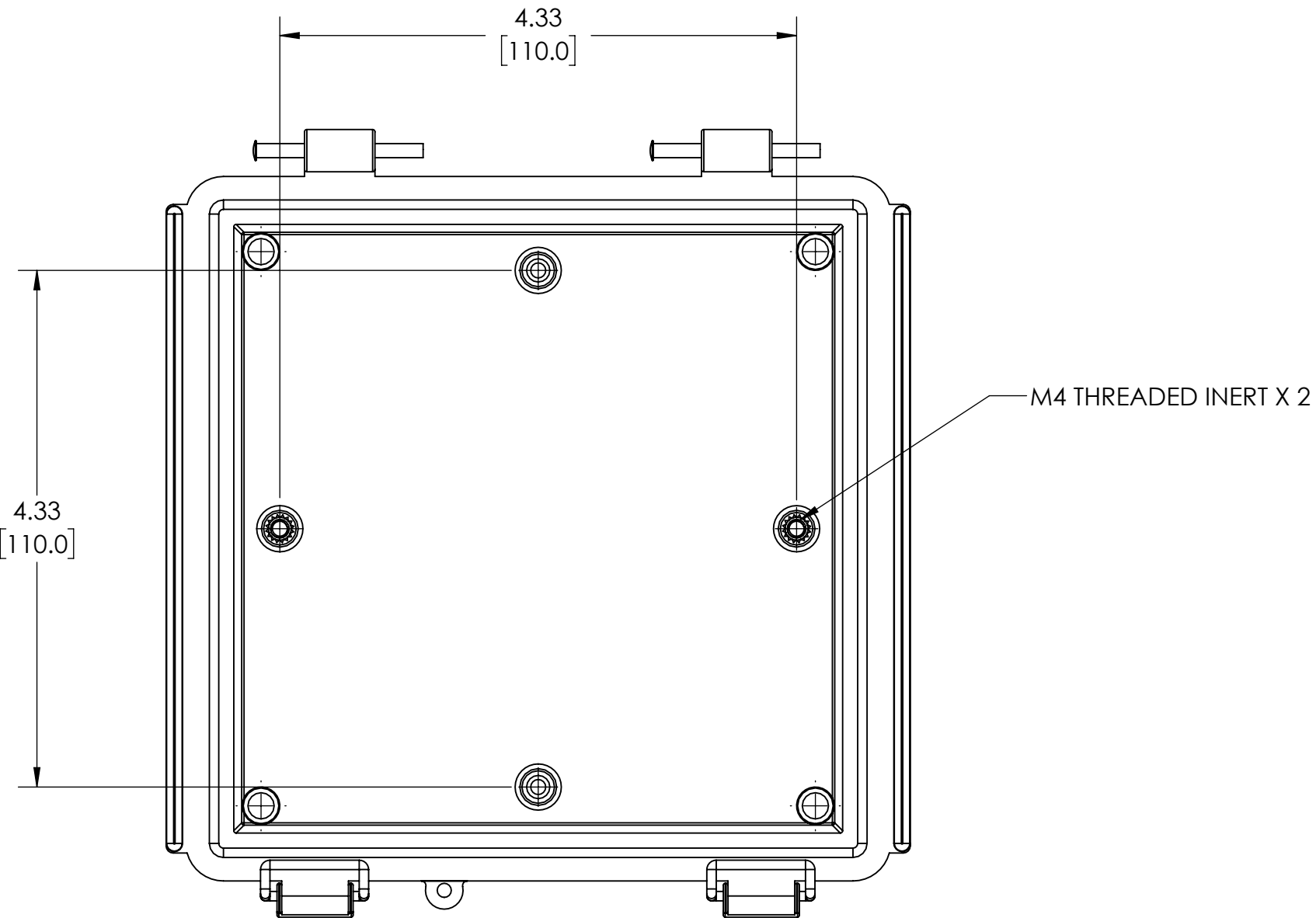


NOTES:

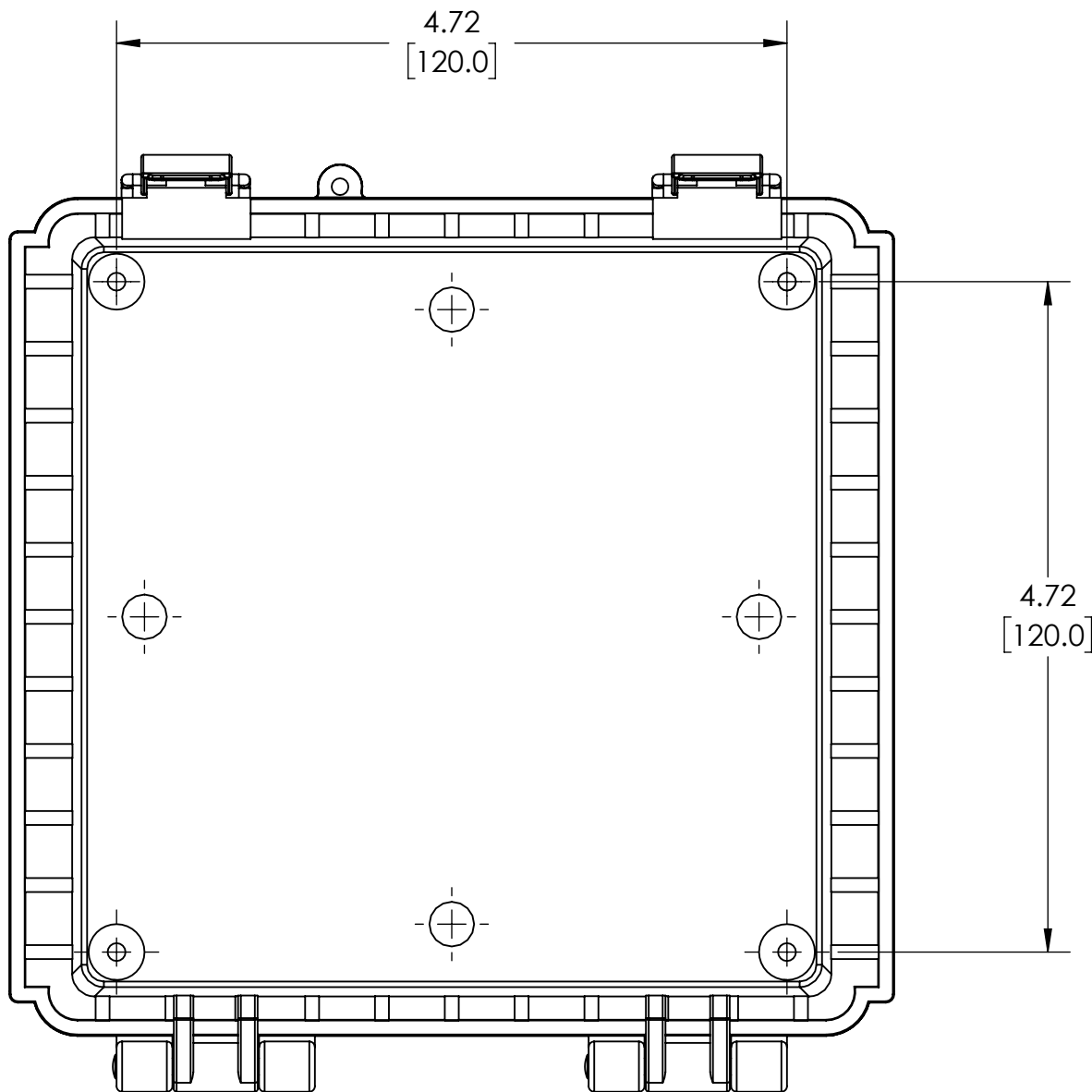
- MATERIAL: ABS
- FINISH: BODY/COVER - GRAY
- RoHS COMPLIANT
- CONTINUOUS GASKET IN COVER
- 20°C TO +65°C EXTENDED EXPOSURE CONDITION
- SUPPLIED WITH TWO M4 x 8mm LG. TRUSS HEAD MACHINE SCREWS
- DIMENSIONS ARE INCH [MM]
- OPTIONAL ACCESSORIES:
INTERNAL STEEL PANEL - #PTX-11046
INTERNAL PLASTIC PANEL - #PTX-11046-P
MOUNTING BRACKET KIT (STAINLESS STEEL) - #NBX-10920



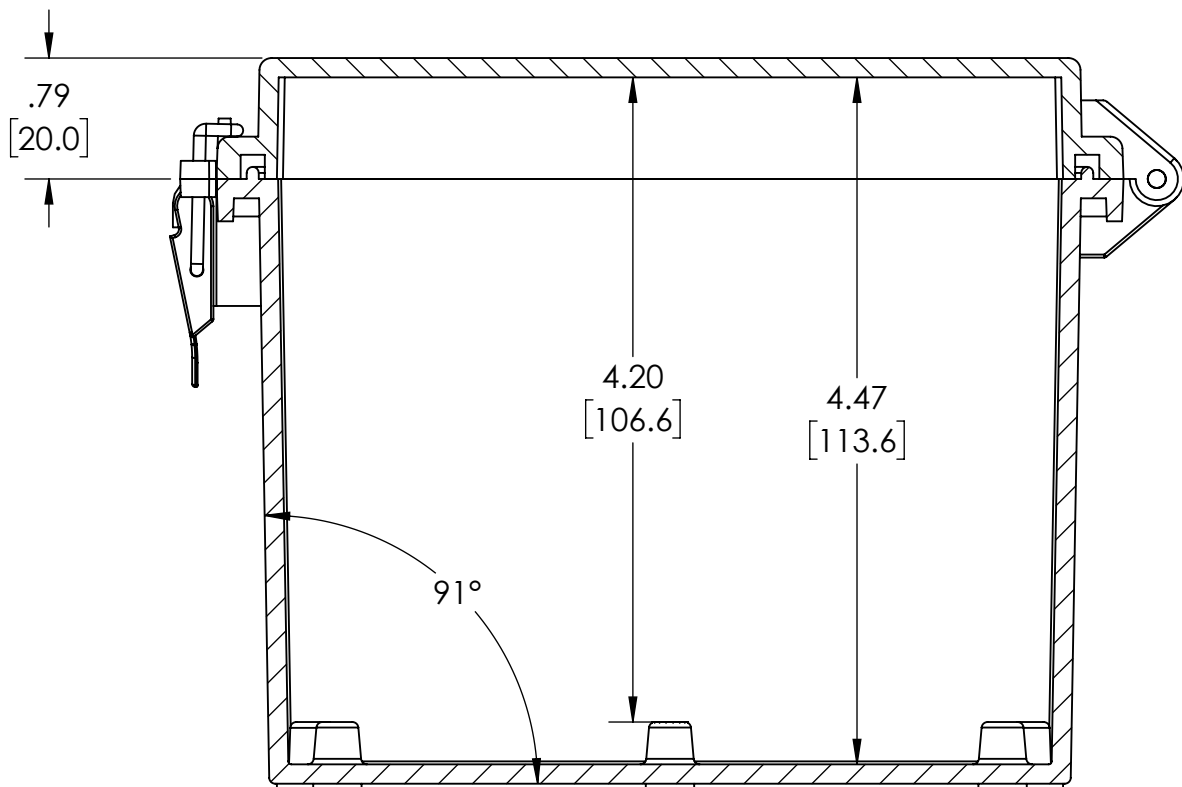
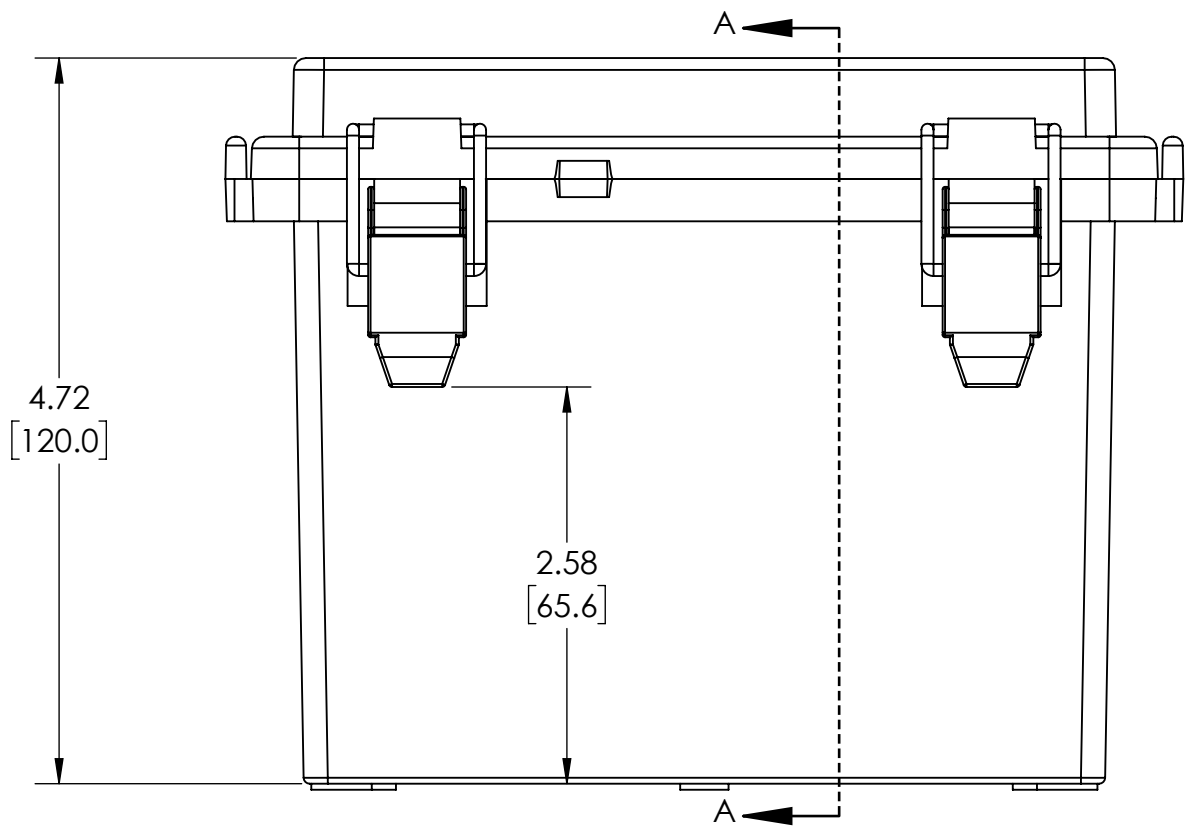
OPTIONAL INTERNAL PANEL AND SUGGESTED PC BOARD LAYOUT



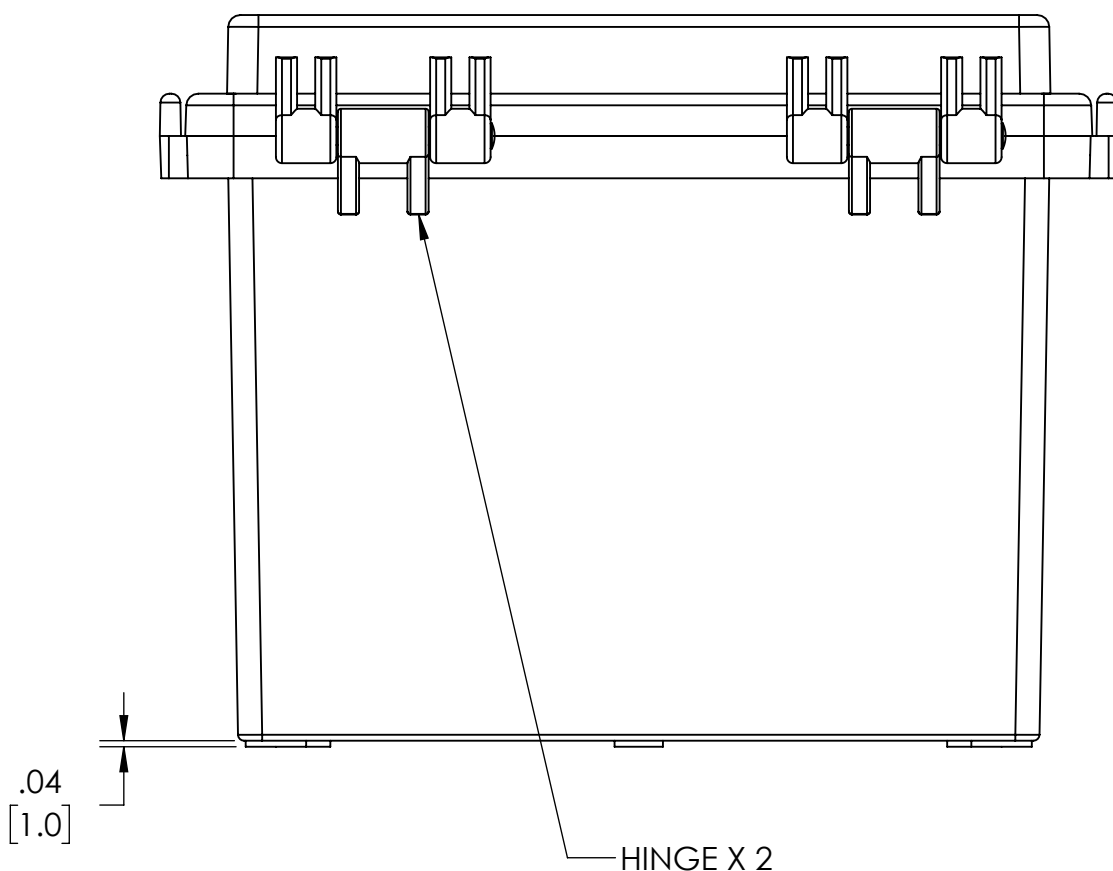
INSIDE VIEW OF BODY



BOTTOM VIEW



SECTION A-A



HINGE X 2

DRAWING FOR REFERENCE
WE RESERVE THE RIGHT TO MAKE CHANGES TO OUR
STANDARD PRODUCTS. PLEASE CONSULT WITH BUD INDUSTRIES
PRIOR TO USING THIS DRAWING FOR DESIGN PURPOSE.