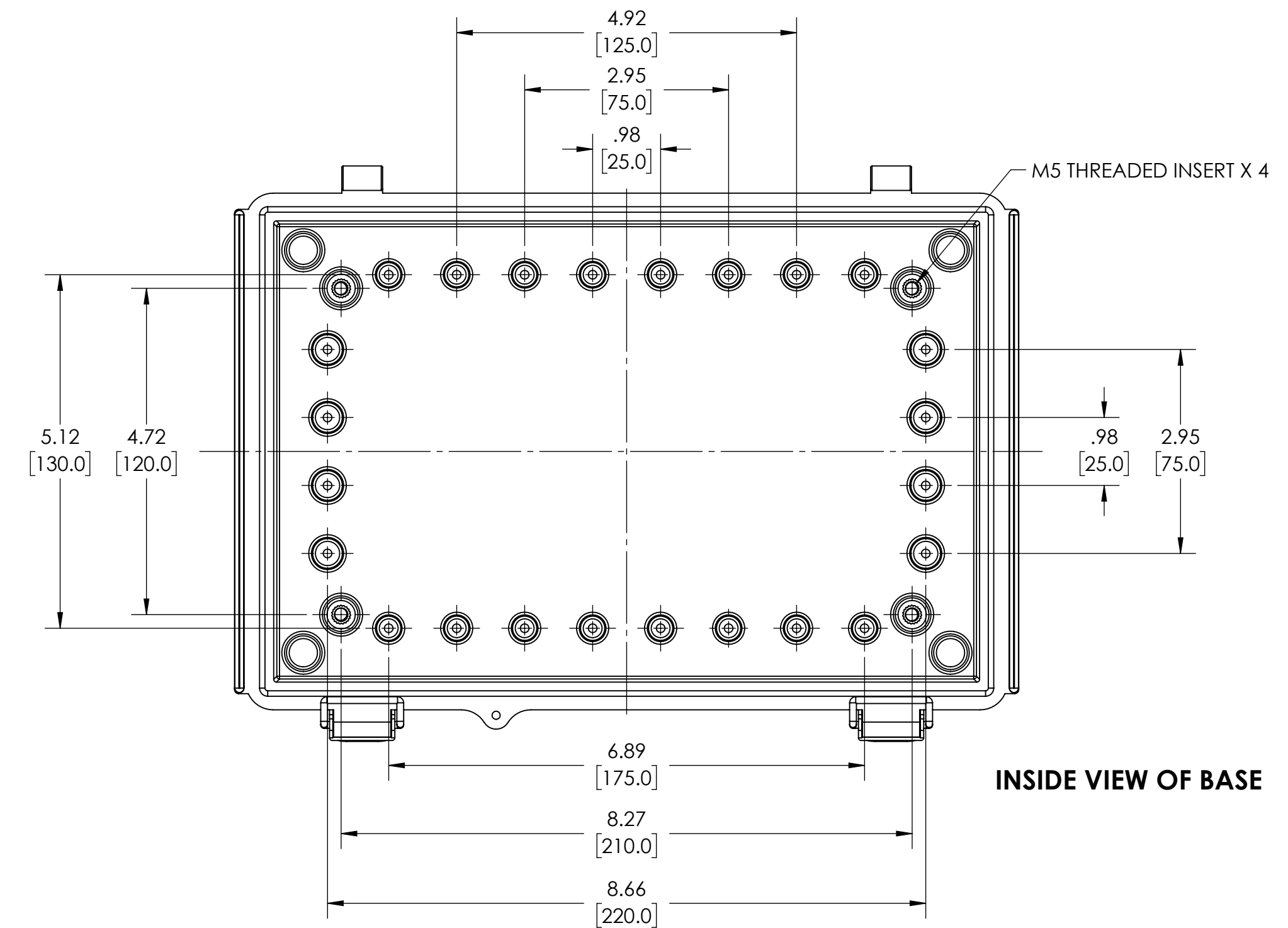
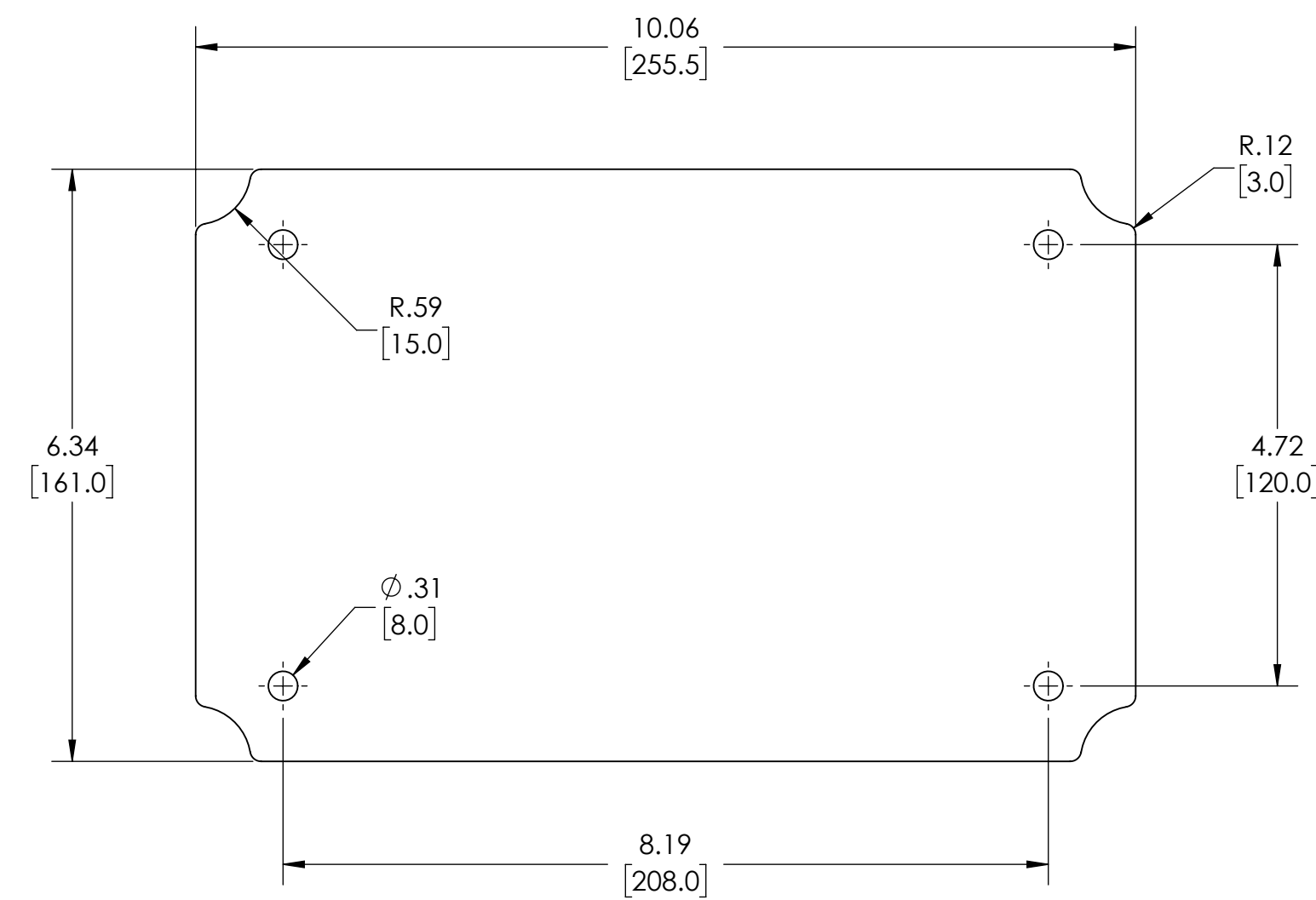
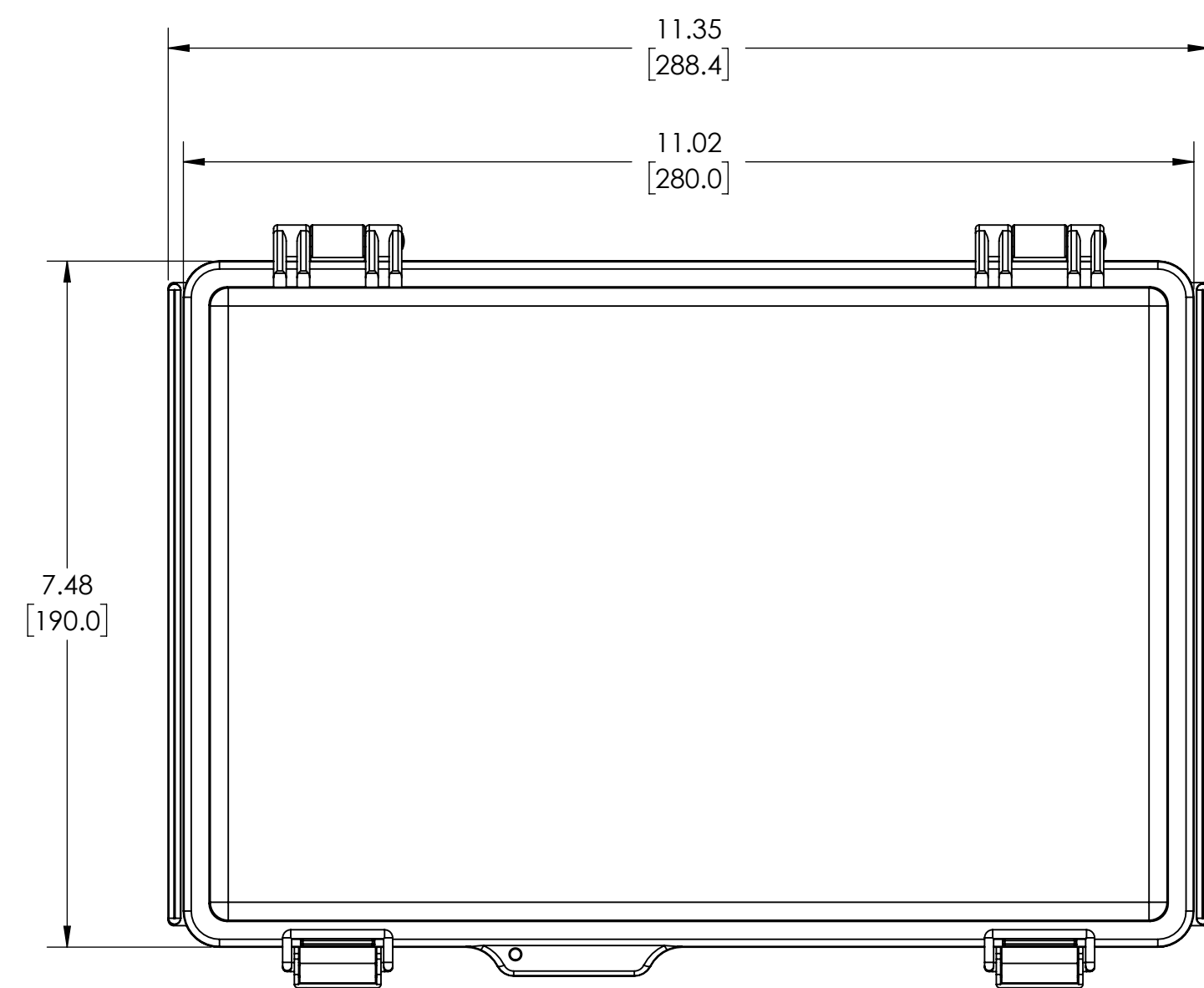


NOTES:

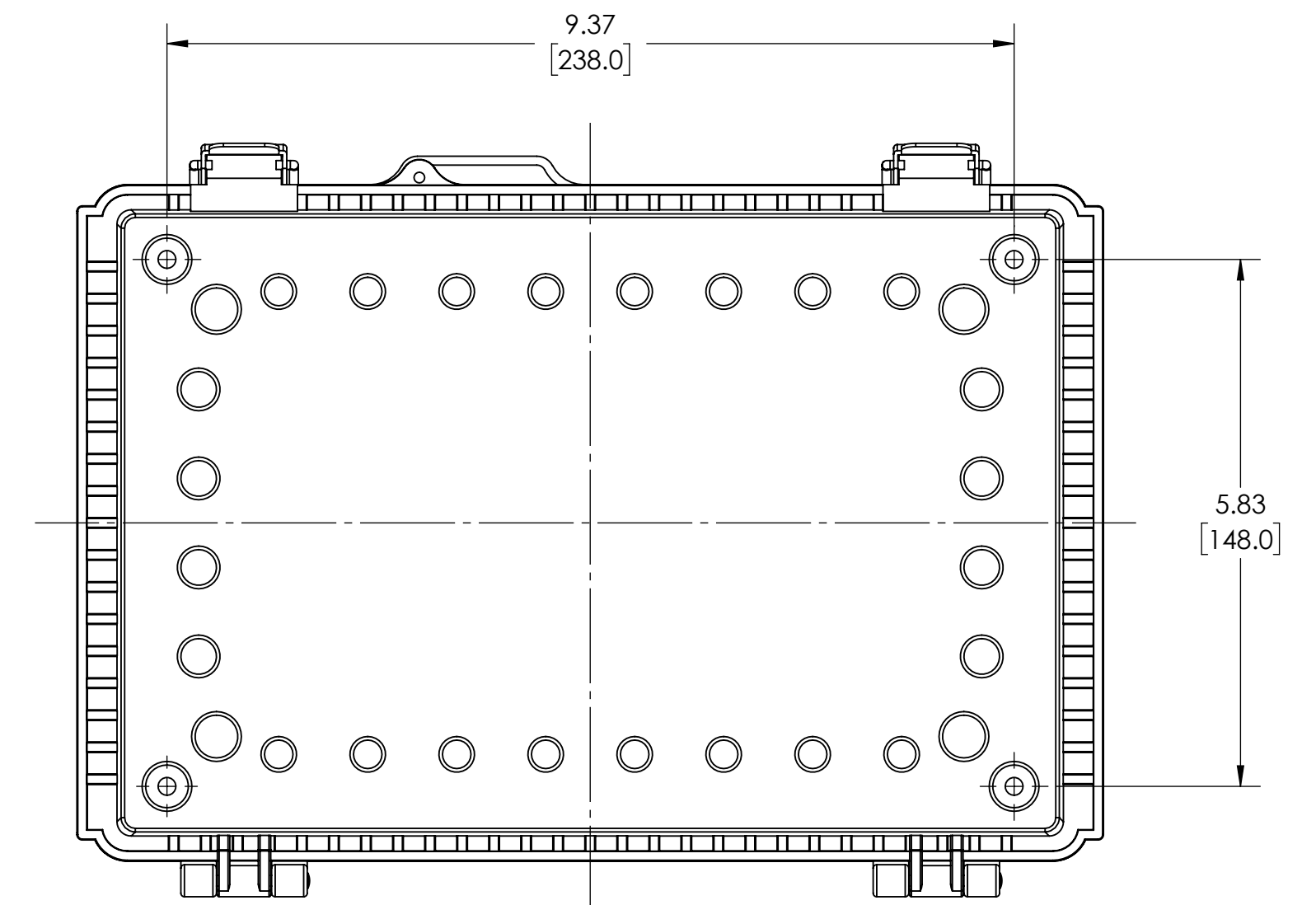
1. MATERIAL: ABS
2. FINISH: BODY/COVER - GRAY
3. RoHS COMPLIANT
4. CONTINUOUS GASKET IN COVER
5. -20 °C TO +65 °C EXTENDED EXPOSURE CONDITION
6. SUPPLIED WITH TWO M4 x 8mm LG. TRUSS HEAD MACHINE SCREWS
7. DIMENSIONS ARE INCH [MM]
8. OPTIONAL ACCESSORIES:
 INTERNAL STEEL PANEL - #PTX-11057
 INTERNAL PLASTIC PANEL - #PTX-11057-P
 MOUNTING BRACKET KIT (STAINLESS STEEL) - #NBX-10922



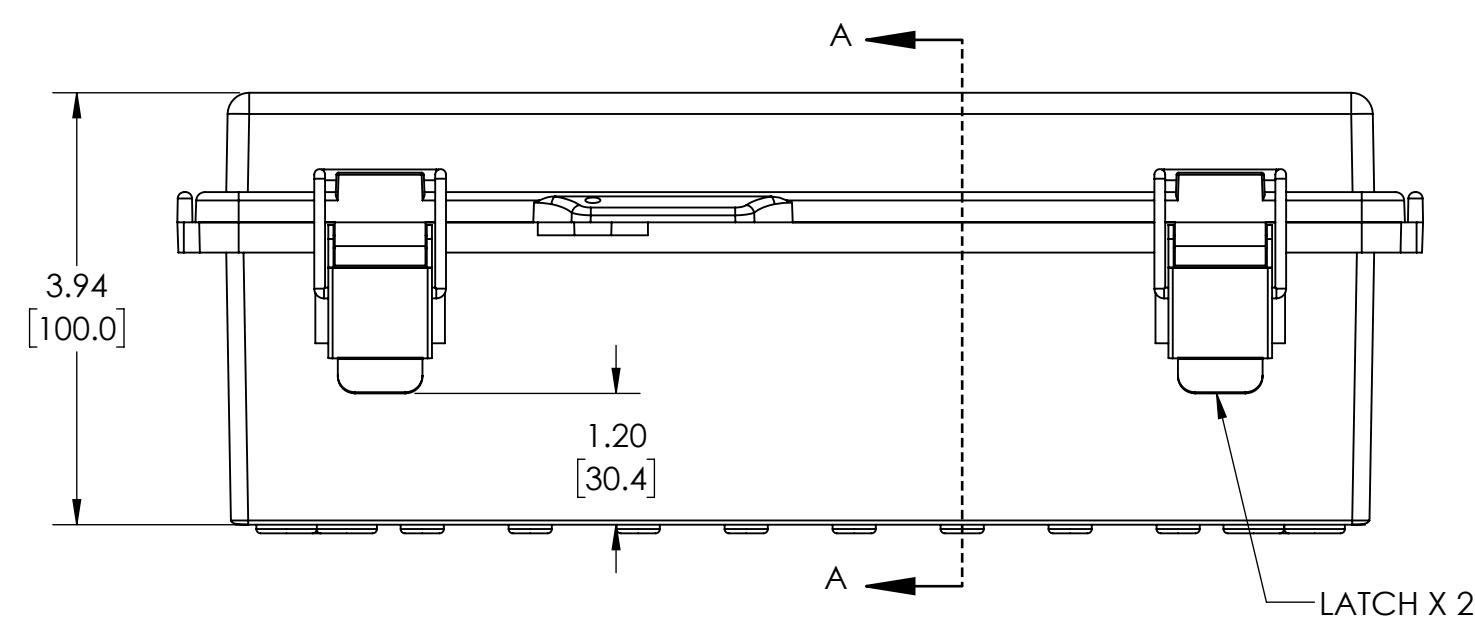
INSIDE VIEW OF BASE



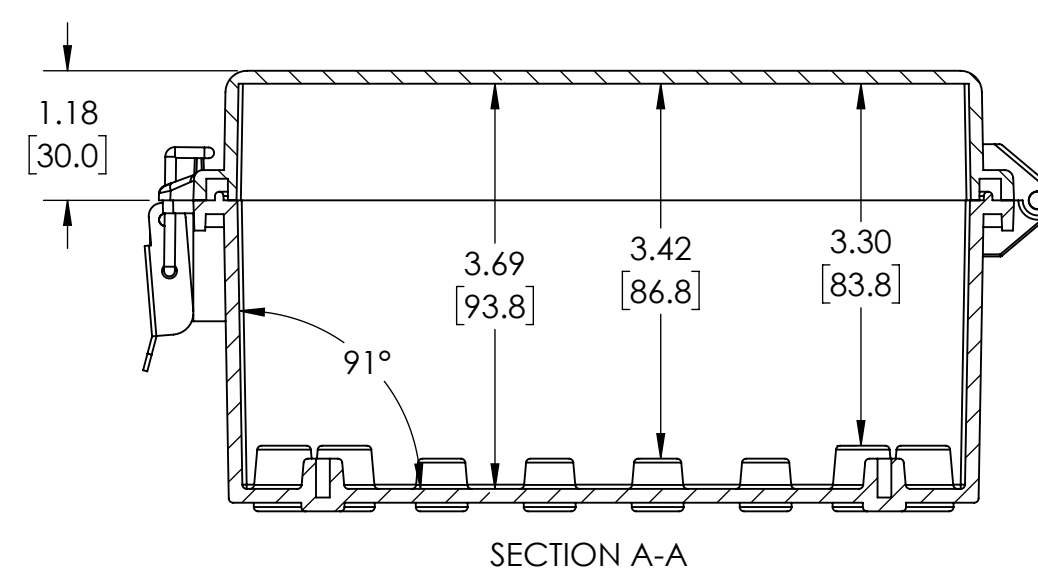
OPTIONAL INTERNAL PANEL AND SUGGESTED PC BOARD LAYOUT



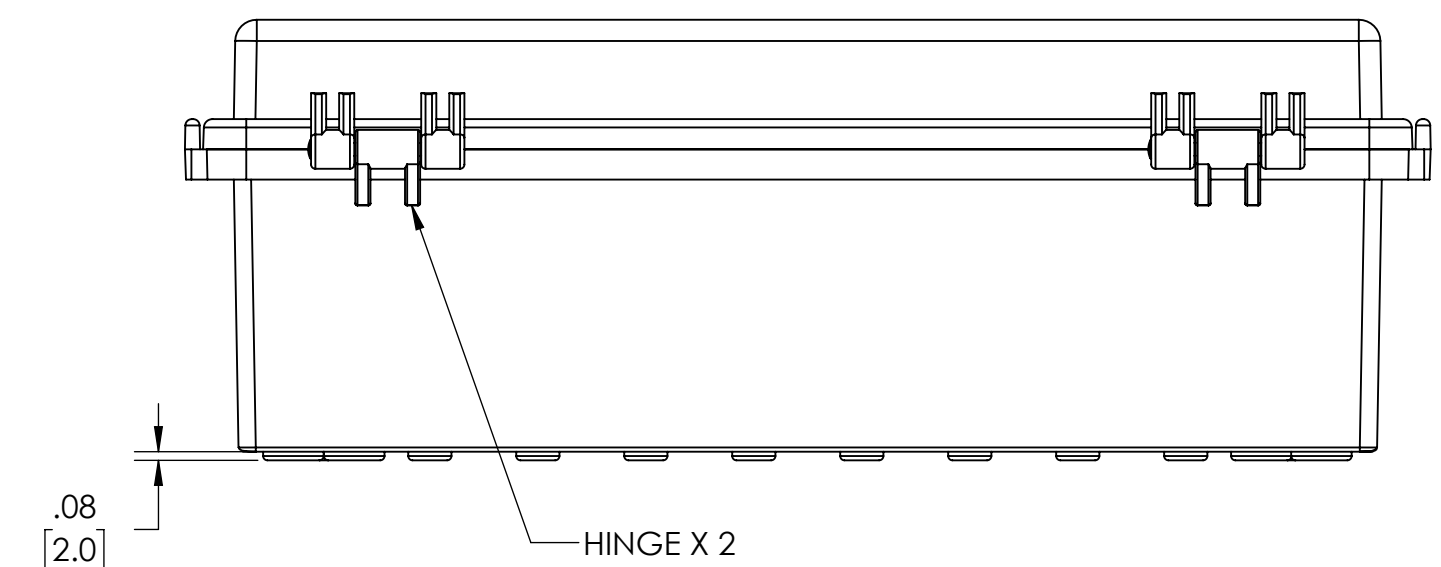
BOTTOM VIEW



LATCH X 2



SECTION A-A



HINGE X 2

DRAWING FOR REFERENCE

WE RESERVE THE RIGHT TO MAKE CHANGES TO OUR STANDARD PRODUCTS. PLEASE CONSULT WITH BUD INDUSTRIES PRIOR TO USING THIS DRAWING FOR DESIGN PURPOSE.